

A Selection of Scales

(for modes shift tonal center to note other than C)

Pentatonic

Akebono/Archiac Greek

(In: tonic 2 'E')

(Iwato: tonic 5 'B')

(Hirajōshi: tonic 3 'F', 4 'A,' or 5 'B')

Kumoi

(Insen: tonic 2 'D')

(Kumoi: simple)



Major Pentatonic (black keys)

(Gōng/Banshiki-Cho: tonic 1 'C')

(Shāng: tonic 2 'D')

(Jué: tonic 3 'E')

(Zhǐ/Yo: tonic 4 'G')

(Yǔ/Minor Pentatonic: tonic 5 'A')

Indonisa

Minor, Major 6



(Minor, Major 6: simple)

Major, Sharp 9 Flat 7

Major, Flat 2

Pelog Selisir (approx.)

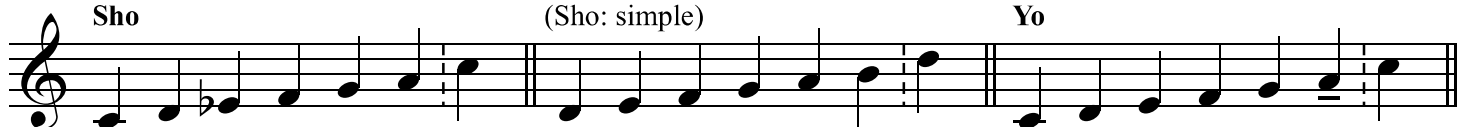


Hexatonic

Sho

(Sho: simple)

Yo



Okinawan-Yo

Sho #2

Whole-Tone



Augmented

Mystic (Scriabin)

Blues

